

MEEKER MANSION
3030 North Lake Shore Drive, Unit 201

caravette.
real estate, inc

caravetterealestate.com | 426 N. Wolcott Ave., Suite 200, Chicago, IL 60622 | O: 312.877.5633 M: 773.758.9857

3030 North Lake Shore Drive

HISTORY



The Meeker mansion was designed by the architect Charles A. Platt in 1913 for Arthur Meeker, the General Manager of the meat packing concern Armour & Co.

Mr. Platt was a prominent landscape designer and architect involved with the “American Renaissance” movement, influenced by the gardens and palazzos of Renaissance Italy. He was responsible for the design and execution of many prominent mansions and estates, including the Edith McCormick Estate in Lake Forest, Illinois; a townhouse for Sara Delano Roosevelt, the mother of FDR; and numerous others across the northeastern United States. Platt is probably best known for his design of the University of Illinois campus at Urbana.

The building was entirely renovated in 2010, creating four unique units. At 3,740 sq. ft., unit 201 is the second largest unit, spanning the east side of the building facing the lake. The original ball room with 11 foot ceilings is now the new great room, kitchen, and dining area, with double doors leading onto a large landscaped terrace. The unit has five bedrooms and four full bathrooms, and a two-car side by side heated garage.

3030 North Lake Shore Drive, Unit 201

GREAT ROOM



2

3030 North Lake Shore Drive, Unit 201

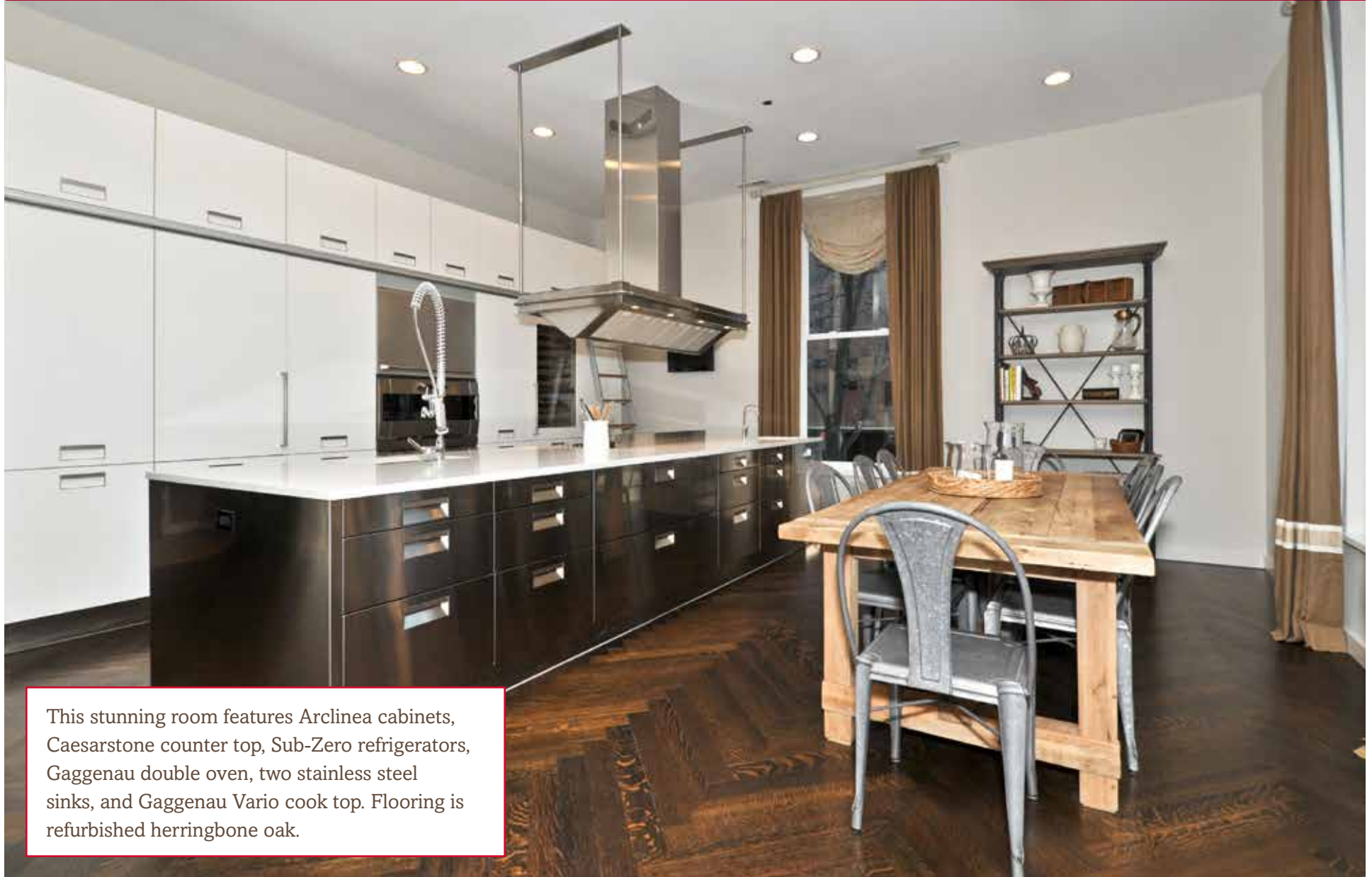
GREAT ROOM (CONT)



3

3030 North Lake Shore Drive, Unit 201

KITCHEN & DINING ROOM



This stunning room features Arclinea cabinets, Caesarstone counter top, Sub-Zero refrigerators, Gaggenau double oven, two stainless steel sinks, and Gaggenau Vario cook top. Flooring is refurbished herringbone oak.

3030 North Lake Shore Drive, Unit 201

MASTER SUITE

The master bedroom has a walk-in closet, a second linen closet, and select white oak flooring. It features east and south facing views of the park.



3030 North Lake Shore Drive, Unit 201

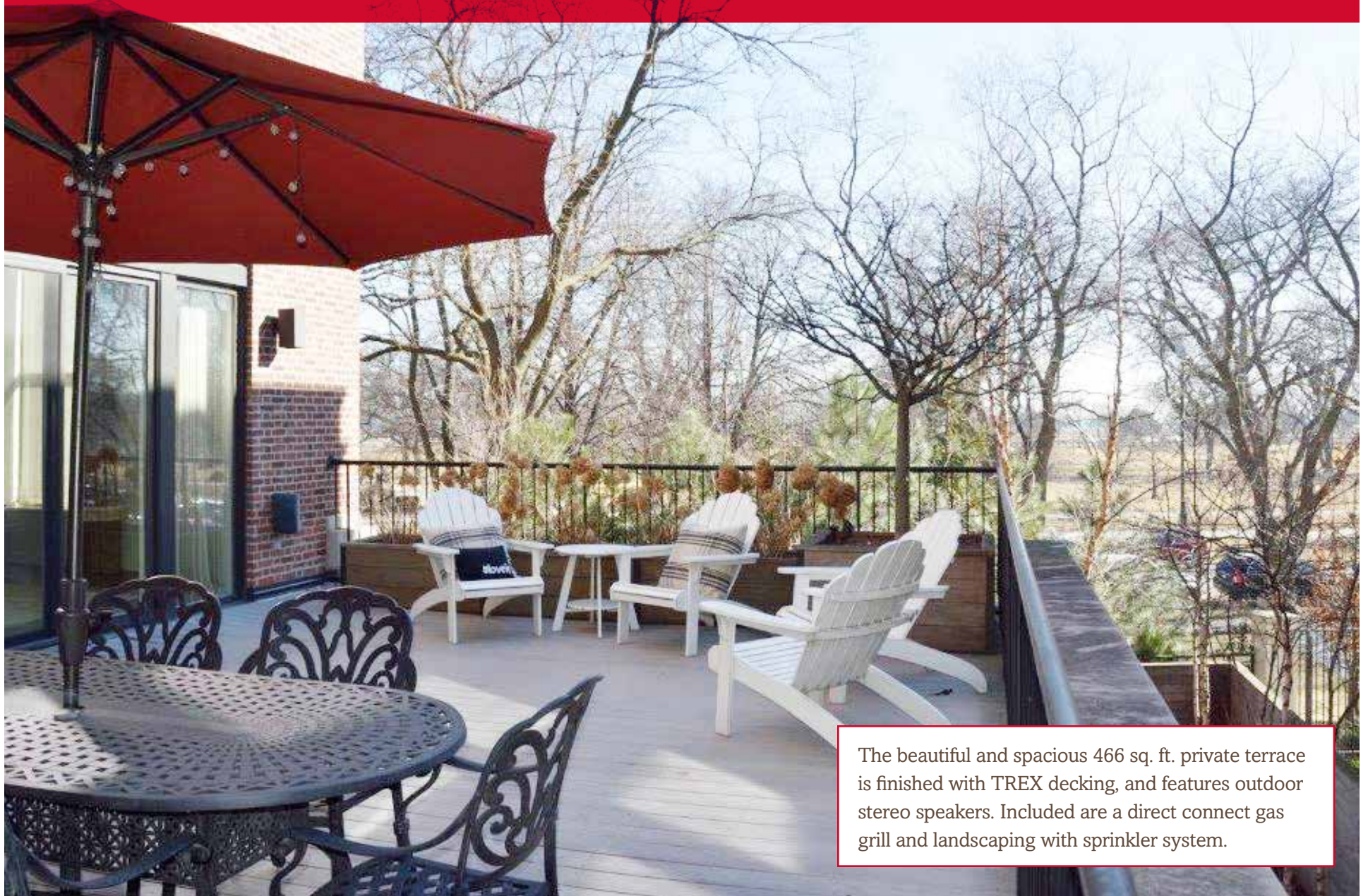
MASTER SUITE (CONT)



The exquisite master bathroom features in-floor heat under tile in shower/toilet area, a large soaking tub, rainshower and frameless glass shower door.

3030 North Lake Shore Drive, Unit 201

PRIVATE TERRACE



The beautiful and spacious 466 sq. ft. private terrace is finished with TREX decking, and features outdoor stereo speakers. Included are a direct connect gas grill and landscaping with sprinkler system.

3030 North Lake Shore Drive, Unit 201

PRIVATE TERRACE (CONT)



3030 North Lake Shore Drive, Unit 201

2ND BEDROOM & ENSUITE BATHROOM



9

3030 North Lake Shore Drive, Unit 201

3RD BEDROOM & 3RD BATHROOM

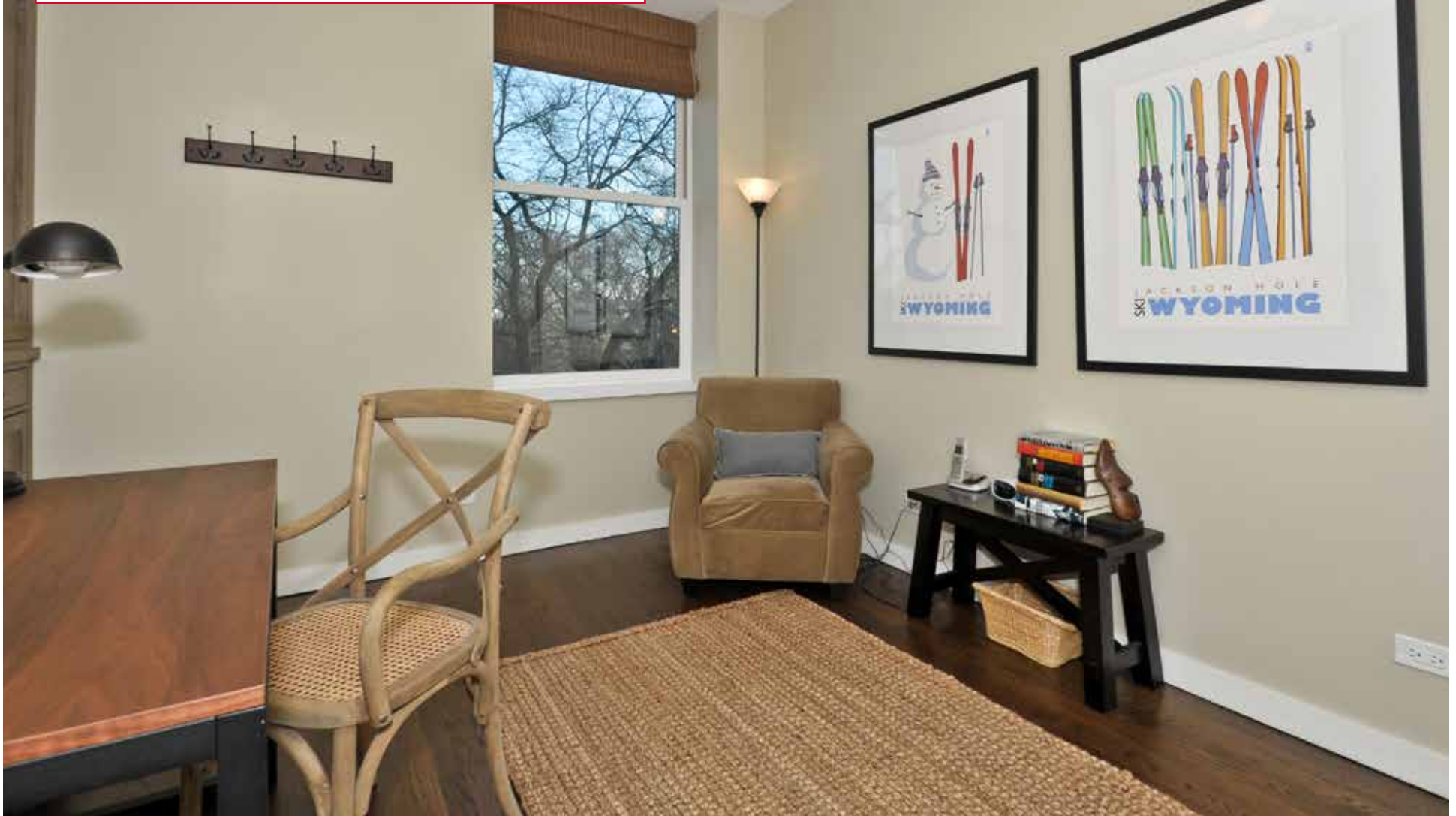


10

3030 North Lake Shore Drive, Unit 201

4TH BEDROOM / UPSTAIRS OFFICE

The 2nd floor office/bedroom has custom cabinets on either side of wall with capability to house a wifi-enabled printer.



11

3030 North Lake Shore Drive, Unit 201

LAUNDRY ROOM

Featuring oversized stackable front load washer and dryer, a stainless steel Elkay undermount sink and high arc pulldown faucet, the laundry room also includes Aiko by Arclinea base cabinets.



3030 North Lake Shore Drive, Unit 201

5TH BEDROOM/TV ROOM & 4TH BATHROOM



13

3030 North Lake Shore Drive, Unit 201

COMMON AREAS



14

3030 North Lake Shore Drive, Unit 201

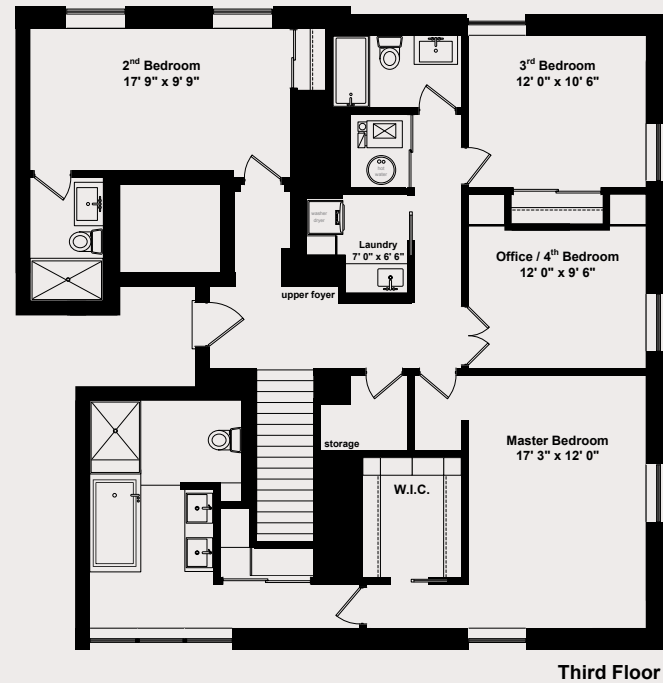
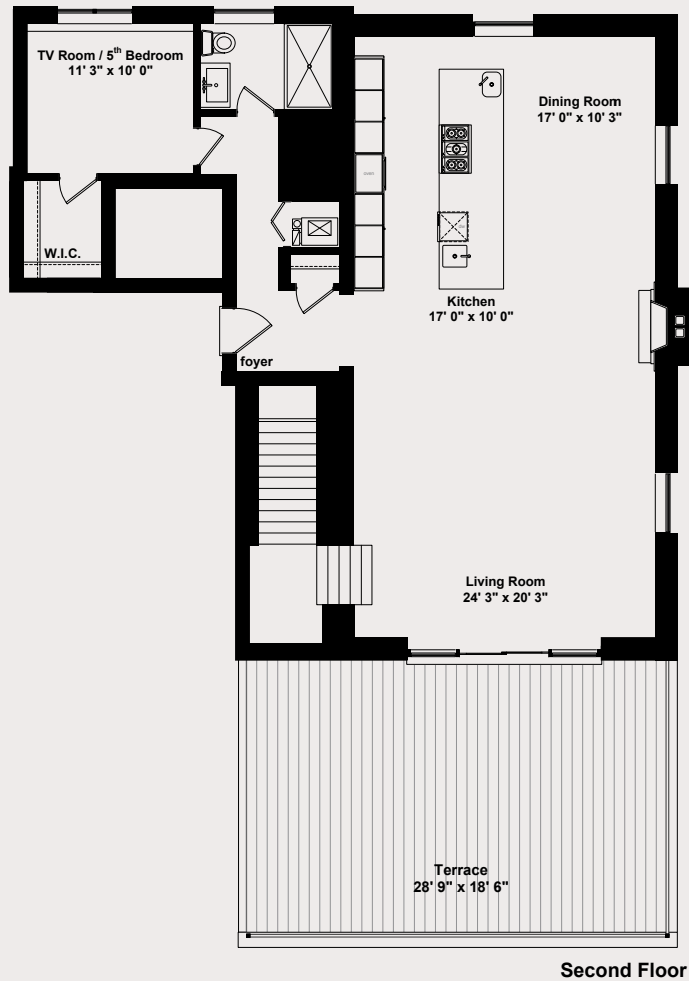
TWO-CAR GARAGE



Two-car, side by side heated garage that is pre-wired to allow for an electric car connection.

3030 North Lake Shore Drive, Unit 201

FLOOR PLANS



2nd and 3rd Floor Duplex
5 Bedroom/4 Bathroom
Interior: 3,274 Sq. Ft.
Private Terrace: 466 Sq. Ft.
Total: 3,740 Sq. Ft.

3030 North Lake Shore Drive, Unit 201

FINISHES & ADDITIONAL DETAILS

Building

- Security features for building include security cameras around the building, lights-on motion sensors, and capacity to view front door from inside unit.
- Upgraded service to building to have either Comcast or RCN as phone/internet/cable providers.

Unit 201

- Entry Door: Solid-core hardwood door with deadbolt and wood veneer
- Interior doors: Solid-core hardwood, painted white
- Door hardware: Schlage Elan
- Anti-theft alarm with motion sensors and door keypad panels by both exterior doors (upstairs and downstairs). Radio back-up installed.
- Professional decorating:
 - Custom window treatments throughout
 - Two chandeliers in between kitchen/dining area and family room area
 - Ceiling fans in four bedrooms
- Insulation: Common walls between units/corridors are insulated with sound-deadening fiberglass insulation

Foyer

- Entry closet
- Refurbished herringbone oak floors

Great Room

- Spark Fire Ribbon 36 in. electric vent-free fireplace
- Stereo speakers connected to Sono System
- Refurbished herringbone oak floors
- Optional: Custom removable cabinetry to house TV and sound components

Private Terrace

- Outdoor stereo speakers
- Hose-bib
- Direct connect gas grill
- TREX decking
- Custom landscaping:
 - Moveable planters with plantings
 - Accent lighting
 - Sprinkler system

Kitchen

- Cabinets: Arclinea (Level 11)
- Countertop: 1-1/4 in. Caesarstone
- Two Sinks: Foster stainless steel
- Sub-Zero Refrigerator: Upper cabinet refrigerator and two freezer storage drawers; 27 in. with ice maker (700TCI)
- Sub-Zero Wine Refrigerator: Upper cabinet wine storage and two refrigerator drawers; 27 in. (427R)
- Double Oven: Gaggenau (EB388-610)
- Cook Top: Gaggenau Vario (VG232+VG321)
- Hood Fan: Arclinea Artusi island
- Dishwasher: Gaggenau (G1976760)
- Disposal: Kitchen Aid 3/4 in. h.p. (KCD1250)
- Refurbished herringbone oak floors

Laundry Room

- Stackable oversized front load washer and dryer
- Cabinets: Aiko by Arclinea (level 1) base cabinets
- Stainless steel Elkay under mount sink
- High arc pulldown faucet

17

FINISHES & ADDITIONAL DETAILS (CONT)

Master Suite

Bedroom

- Walk-in closet finished by California Closet and with electrical outlet for clothes steamer
- Second linen closet
- Wired for wall mounted TV
- Flooring: 2-1/4 in. select white oak with dark stain finish

Bathroom

- In-floor heat under tile in shower/toilet area
- Tile: Custom cut Bianco Dolomiti 6 in. x 24 in. and 2 in. x 4 in. mosaic shower and water closet floor, and shower walls to ceiling
- Vanity: Duravit Fogo Floating console
- Two sinks: Duravit 2nd floor series recessed wash bowls
- Shower Fixtures: Ceiling-mounted rainshower, shower head and handshower
- Tub: 6 ft. Zuma series deck-mounted soaking tub
- Toilet: Toto Supreme one piece with soft-close lid
- Broan recessed medicine cabinets
- Frameless glass shower door
- Pre-wired for one stereo speaker and volume control

Bedrooms 2 and 3

- Closets finished by California Closet
- Flooring: Carpet

Upstairs Office/Bedroom 4

- Custom cabinets in office on either side of wall
- Capability to house a wifi-enabled printer in cabinet

Guest Room / Bedroom 5 (TV Room)

- Walk-in closet finished by California Closet
- Flooring: Carpet
- Wired for wall-mounted TV

Bathrooms 2, 3, and 4

- Custom tile work
- Duravit sinks with wall-mounted washbasin
- Toto toilet with soft close lid
- Flush wall mounted mirror cabinets
- Bathroom 2 ensuite: Shower with frameless glass shower doors
- Bathroom 3: 5 ft. Zuma soaking tub plus a shower
- Bathroom 4: Shower with frameless glass shower doors

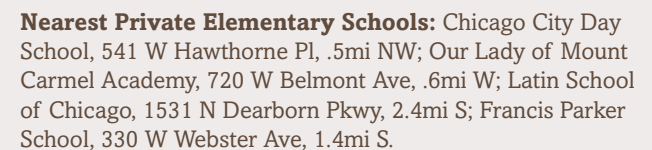
Advanced E-Lifestyles Features

- Network distribution center
- 7 Telecom/data outlets utilizing high-speed CAT 5E cable
- High-speed internet hub
- Wiring for wall-mounted TVs in kitchen, master bedroom, upstairs office/bedroom 4, downstairs TV room/bedroom 5. TV wiring also runs to cabinet in great room, bedrooms 2 and 3.

Additional Unit Features

- Secured basement storage area
- 75 gallon capacity hot water heater
- Twin zoned gas forced-air furnaces and air conditioners
- Whole-unit humidifiers
- Two programmable digital thermostats
- Fire suppression system: Hardwired smoke detector and sprinkler system
- Hardwired carbon monoxide detectors

YOUR NEIGHBORHOOD



caravette.
real estate, inc

caravetterealestate.com

426 N. Wolcott Ave., Suite 200, Chicago, IL 60622

O: 312.877.5633 M: 773.758.9857